



RANDOLF VIRTUAL AMP

HOW TO USE



Introduction

RANDOLF VIRTUAL GUITAR AMP is a digital reincarnation of a modern American high gain amp¹ with a bold, cutting midrange which will ensure that you stand out in the mix. The amp is voiced stage-friendly with an upper-midrange bark, ensuring that your tone doesn't get lost amidst thrashing cymbals and walloping kick drums.

It is a direct replication with advanced algorithmic implementation, to capture the sound in detail, as far as possible. The amp has three channels: clean, gain 2 and gain 3 for cutting high gain sounds. Beyond the original, this Virtual Amp also has an adjustable Mid Frequency (M.F.) and an additional Mid Cut (M.C.) per channel, to give you the possibility to tailor the sound even more to your needs. To your convenience the Virtual Amp (VA) also comes with a built-in Impulse Response Loader for direct access to a built-in or loadable custom cabinet models. The VA can be played as stand-alone Program or as VST/AU plugin in your Digital Audio Work Station. Also, a quick record functionality is available to record ideas directly in stand-alone mode as high quality 16-bit wav files. Furthermore, input and output level meter are available to prevent unwanted clipping distortion. All VA Settings are automatically stored after each session and restored at the next start. Settings can also be stored via preset as usual.

We wish you much fun with this Virtual Amp and endless hours of unchained high-gain chugging experience.

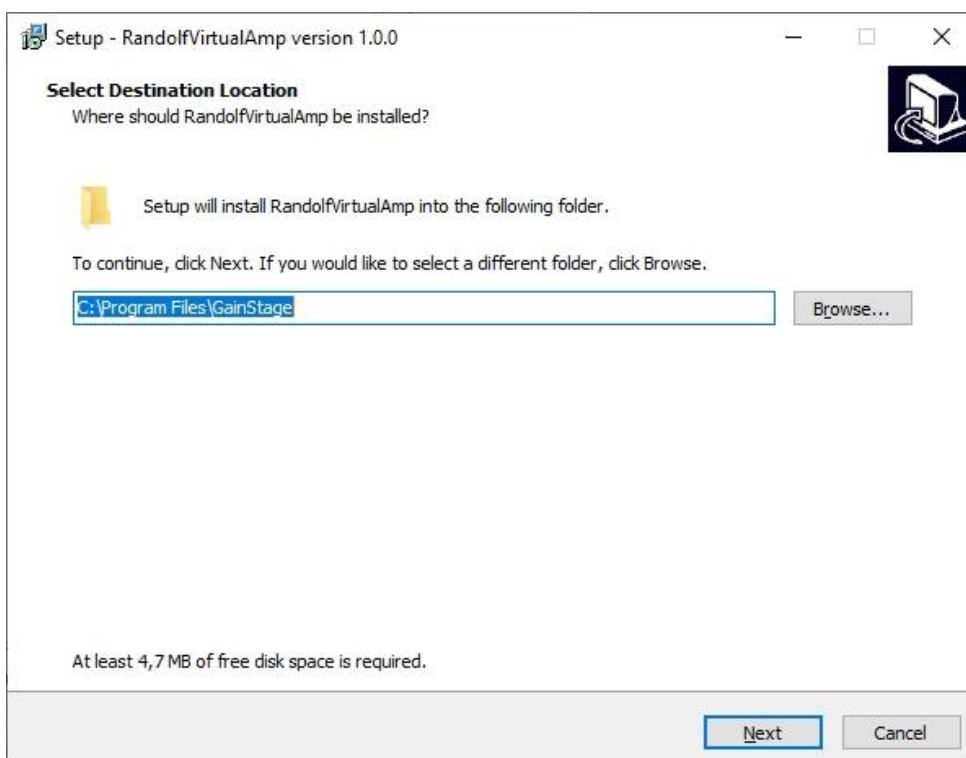
1: 100W full tube power variant.

Installation of the Software

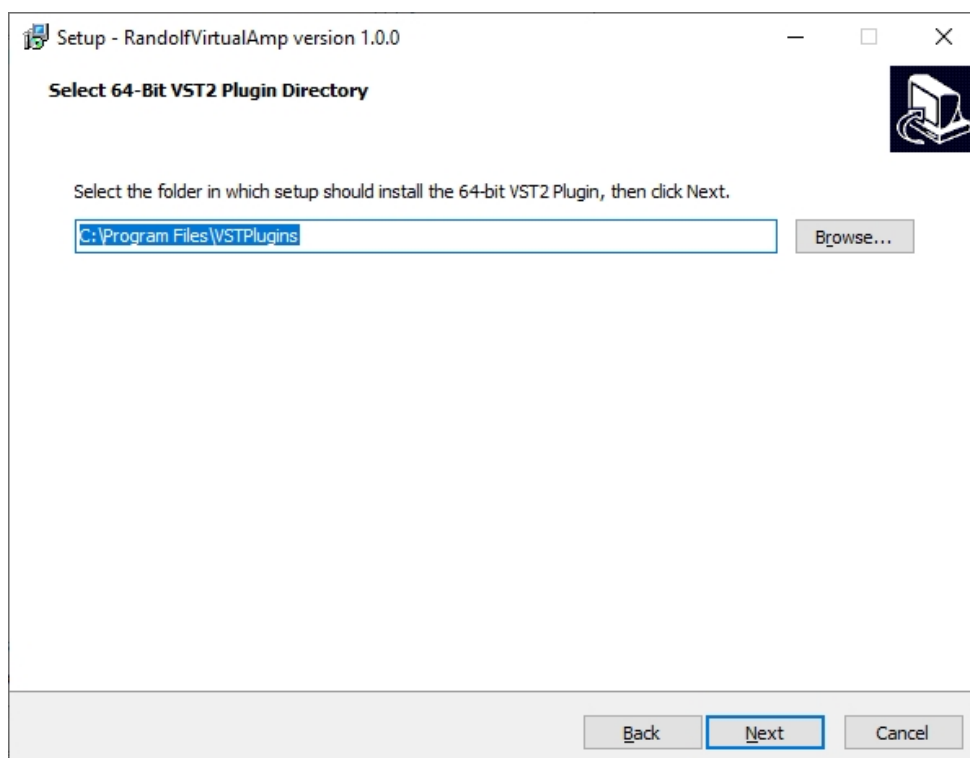
WINDOWS

Common installation procedure, please open the installation program:
RandolfVirtualAmp_Installer.exe

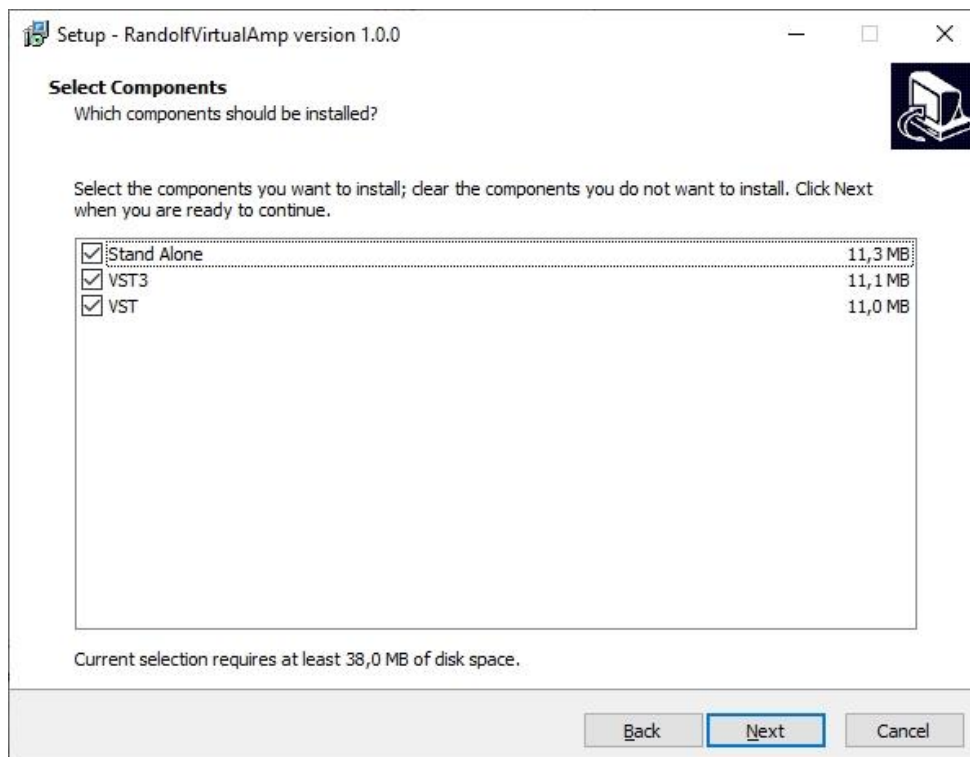
And choose the installation path of the stand-alone application



And the VST2 plugin, if you prefer to install it.

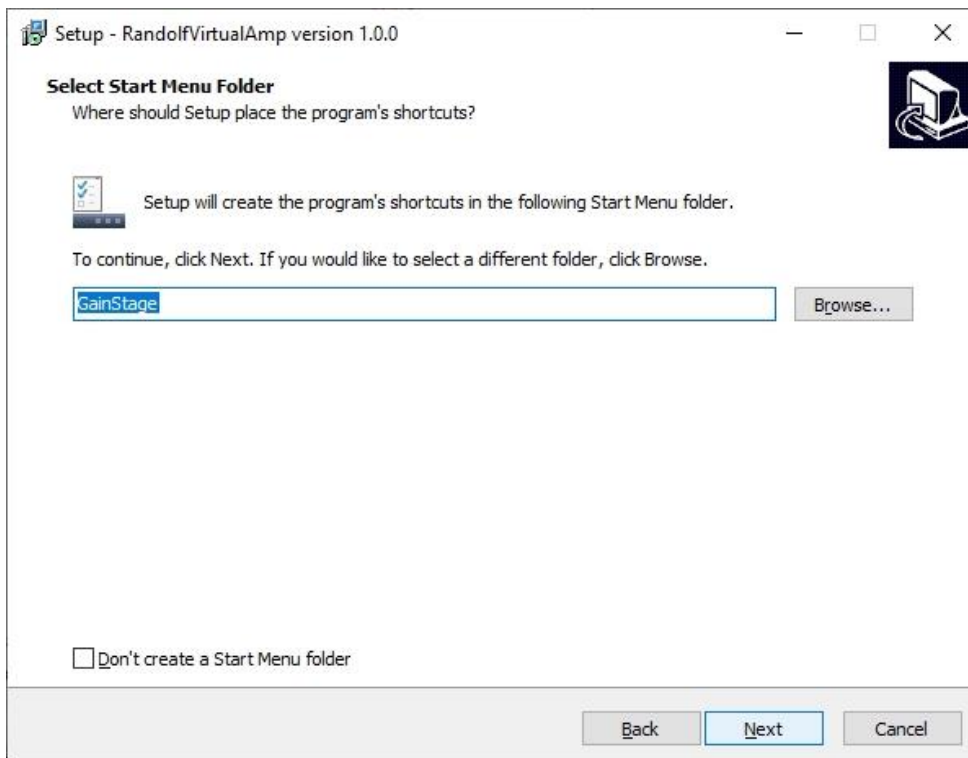


In the next dialog window, you can choose, which of the software parts you would like to install.

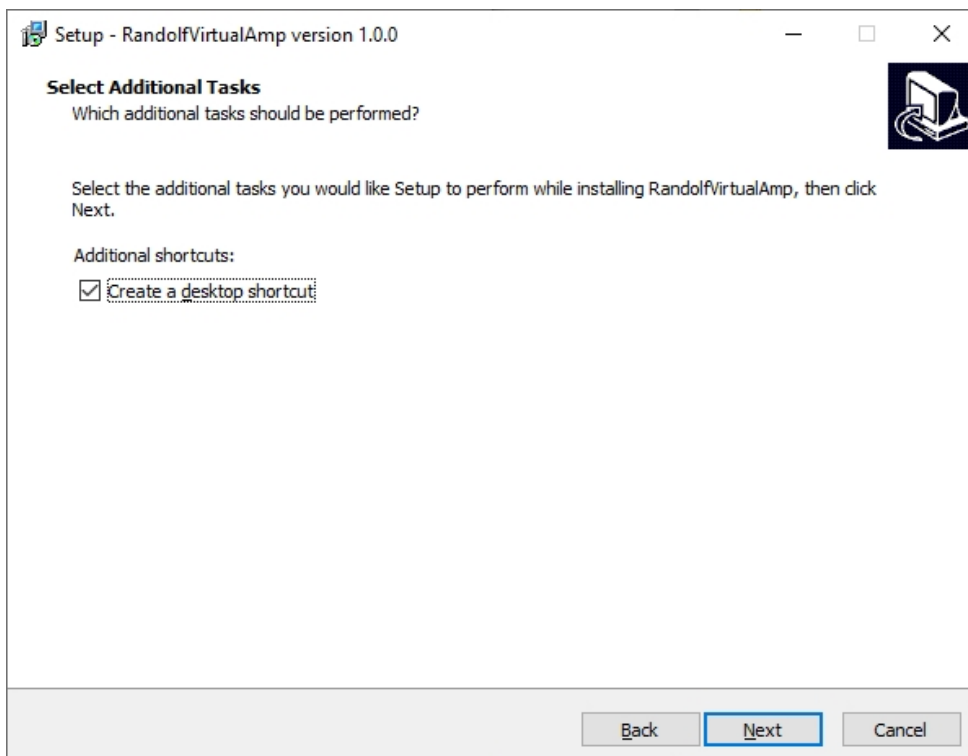


Remark: The VST3 Plugin will be installed in a standard folder on your system (usually: C:\Program Files\Common Files\VST3).

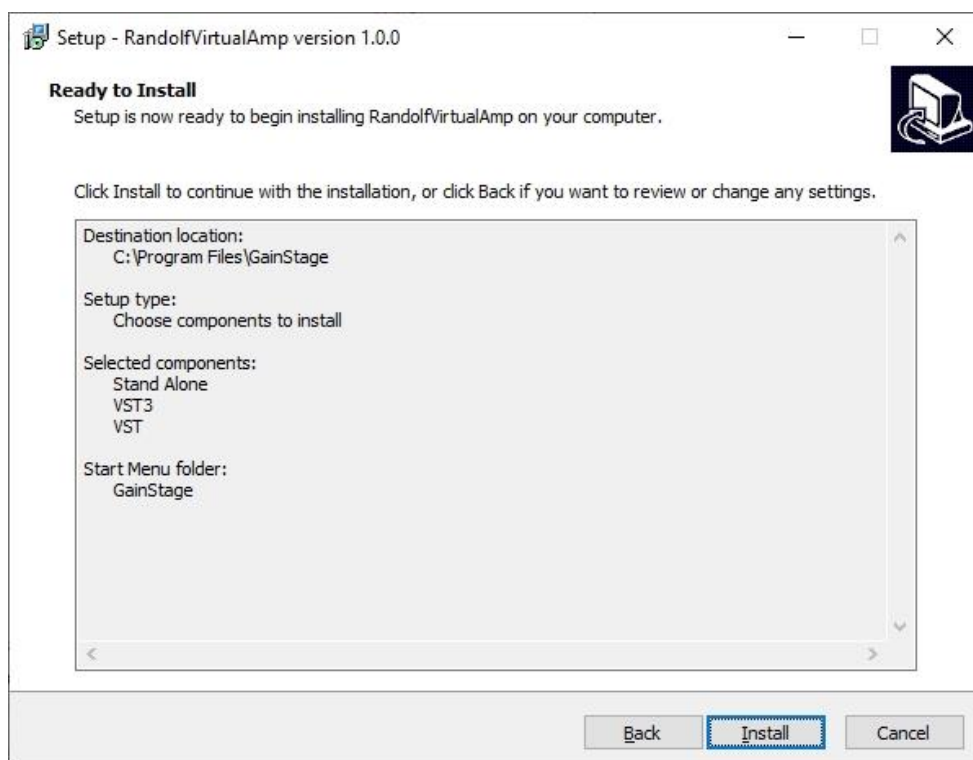
Furthermore, you can define, if a *Start Menu Folder* is created in the Windows start menu:



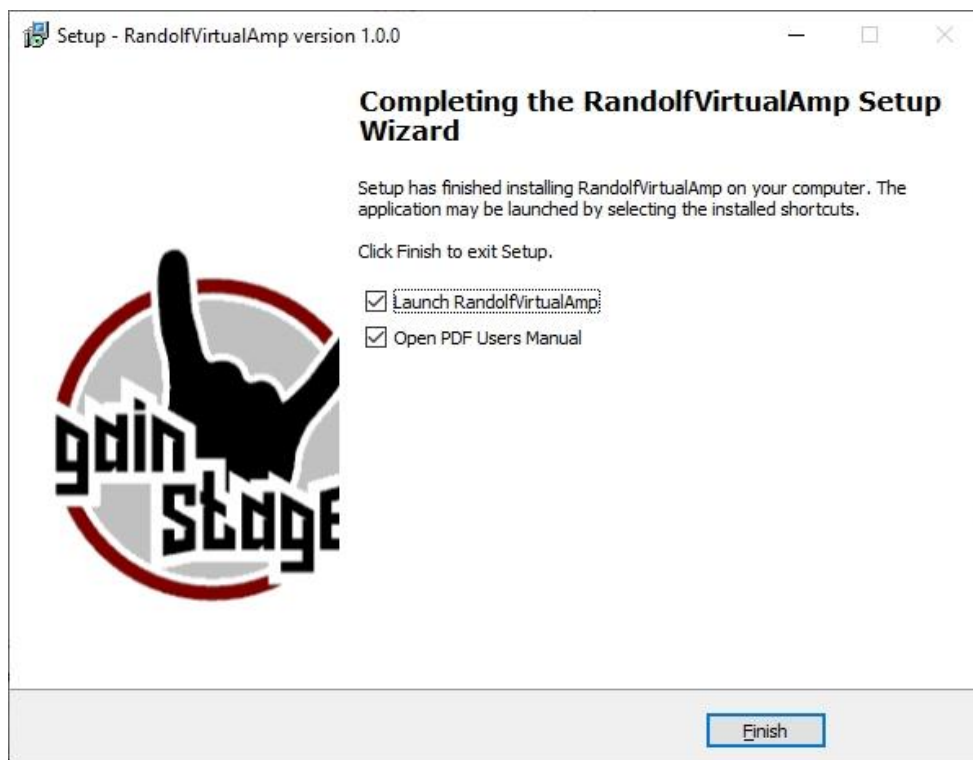
and a desktop shortcut should be created.



The last installation page finishes the procedure



and you can now enjoy your new Virtual Amp.

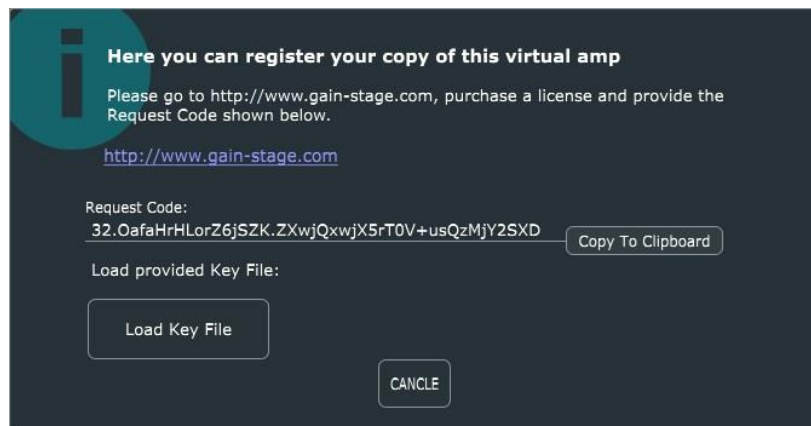


MAC

Open *RandolfVirtualAmp_Installer.pkg* and follow the guided install procedure (as usual).

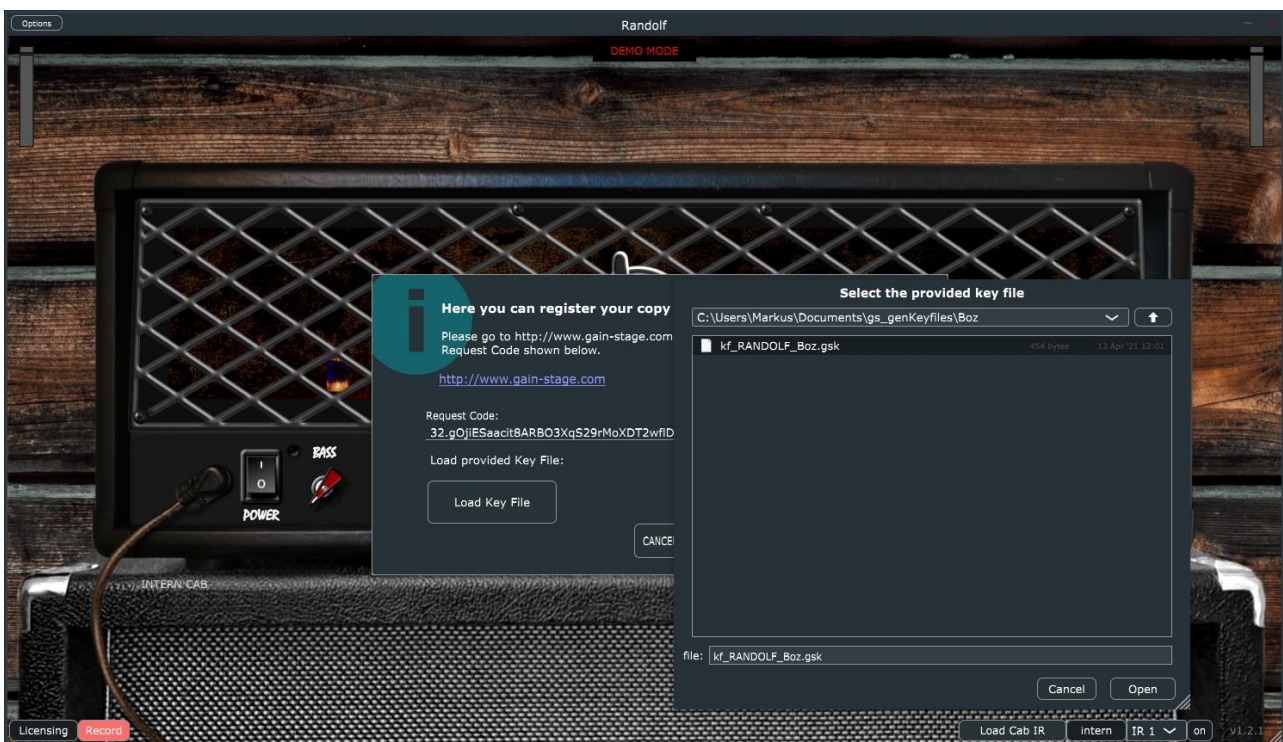
Registration of the Software

To overcome the limitations of the demo mode you can buy a license online at <http://www.gain-stage.com> and register your Virtual Amp via the dialog shown after pressing the licensing button (in the left bottom corner).



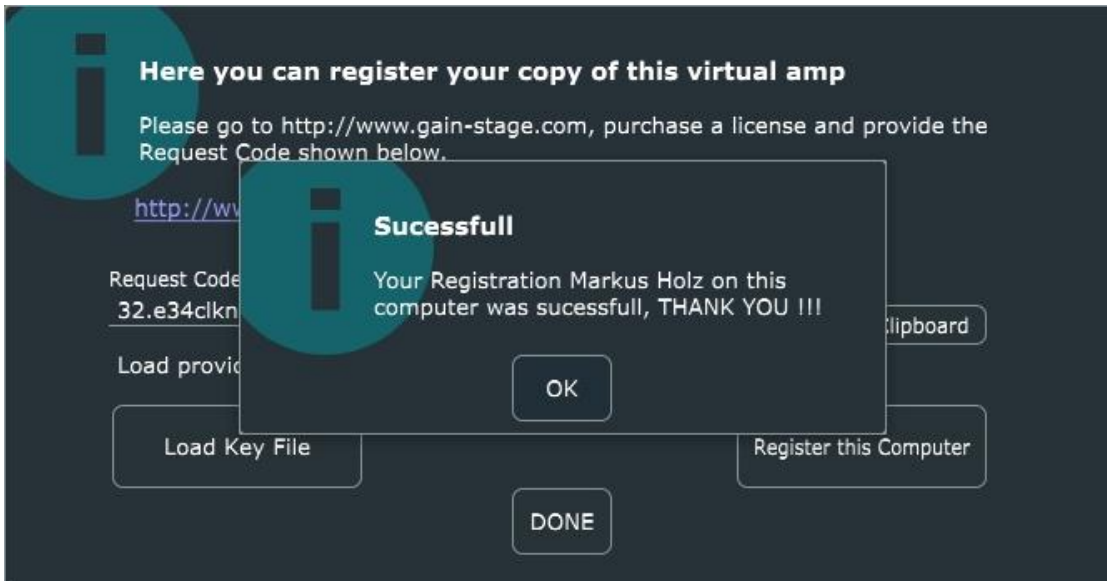
Copy the Request Code (a string like this:

32.e34clknfvcyPvgIVUw1zKVkLHnlvZIFTGCGJPgfcGg2D) and provide it to us, as we have stated after the purchase of the license. We provide you then



a key file for the dedicated machine related to the request code. This you can load via the Load Key File Button and the occurring File Chooser Dialog

After successful registration you can use your Virtual Amp without any limitations.



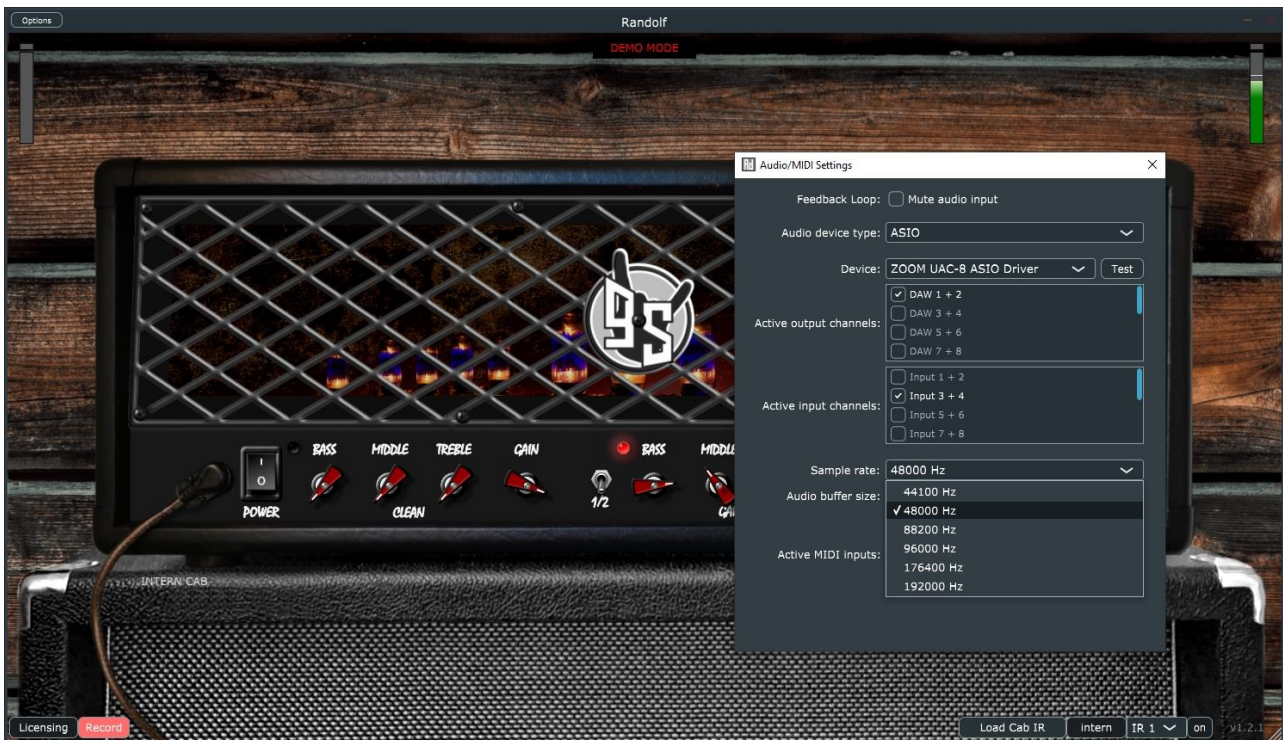
Please go to <http://www.gain-stage.com> for further product related information. You can also contact us via email: contact.gainstage@gmail.com for further support, questions and feedback of any product related kind.

Remark: The unregistered Virtual Amp is in DEMO MODE, which gives you the possibility to try out the sound, response and functionality of the software, but will open a DEMO MODE dialog box from time to time, that interrupts the user experience.

AUDIO Setup

Via the Options menu in the upper left corner, you can open the Audio/MIDI setup. Here it is important to choose the right audio driver. For real-time convenience it is recommended to use an ASIO driver. Please then choose the right output and input channels according to your connections on the PC.

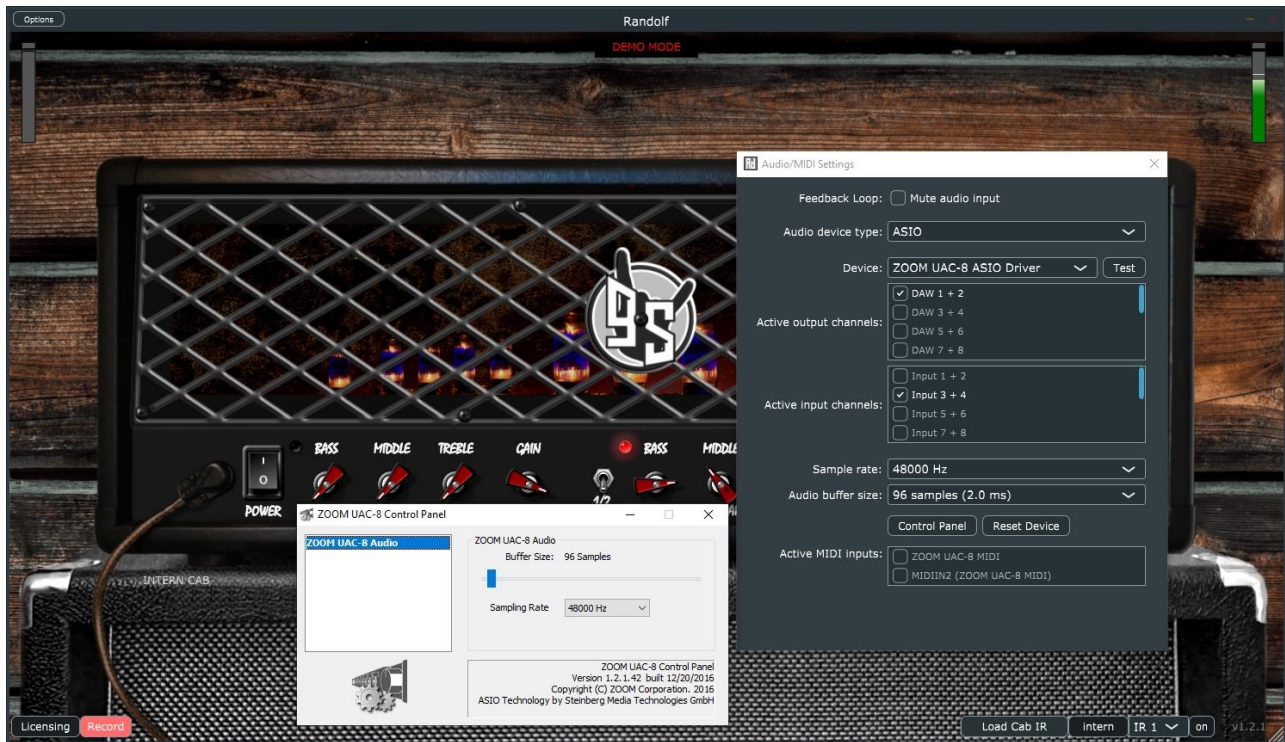
Remark: In the standalone application the VA only uses the 1st Input of a set stereo input pair.



After that, please set the *sample rate* according to your needs. As rule of thumb: the higher the *sample rate* the better the sound quality of the plugin but the bigger the *audio buffer* size must be set in your audio interface settings to not introduce distortion artifacts, to fulfill the real-time constrains.

SOUNDCARD SETUP

If the chosen *sample rate* introduces distortion artifacts to the sound of the VA you have to adapt the *audio buffer size* in the driver menu of your audio device. This can be opened, via the *control panel* button, as shown below:



here you have to increase the *buffer size* of your audio device until no distortion artifacts are hearable on a chosen *sample rate*.

Virtual Amp Settings

The self-explanatory ON/Off switch from left to right is followed



By the knobs for the parametric equalizer (EQ) and gain for each Channel. In between this knobs a toggle switch is placed, to change between CH2/3. After the EQ sections two smaller knobs (*M.F.* and *M.C.*) sit on top of each other, which can be used to shift the crucial mid frequency (*M.F.*) +/- 250 Hz around the center frequency of 750 Hz and engage a mid-cut (*M.C.* , rotation from right to left: 0 - 8 dB) filter at 400 Hz, to get a more scoped and defined chugging rhythm sound. The sound stack of the amp concludes with the usual *Presence* and *Master* Knob (overall volume) and the channel switch to

choose between the clean channel (CH1) and lead channels (CH2/3)². To your convenience, all set parameters of the amp are automatically and persistent stored after closing the *stand-alone* or *plugin* Virtual Amp in between sessions. You can also generate user specific preset files to store a dedicated setup for a future session via the Options or DAW (Digital Audio Workstation) menu.

USE INTERNAL AND EXTERNAL IRS

The Virtual Amp comes with a built-in **Impulse Response (IR) Player**. All related buttons are located at the right bottom of the GUI. The IR Player includes several intern *Speaker Cabinet* models selectable with a dropdown box and also features the capability to load external IRs with a *Load Cabin IR* button.



When pressed, a file choosing dialog opens up (the last used path is always stored to your convenience) to choose an IR audio file (in *.wav format). You can switch from intern to extern IR via *intern/extern* button. The IR based cabinet emulation can also be switched off, to use your own *Impulse Response Player* (*on/off*-Button at the right lower corner).

2: The Chosen channel is also indicated by the lights (LEDs) above the EQ section of the channel