



# ROLAND VIRTUAL AMP

---

## HOW TO USE

ENTER  
YOUR NAME

# Introduction

ROLAND VIRTUAL GUITAR AMP is a virtual recreation of the legendary tube amp, which is one of the pillars and a standard for modern heavy high gain sounds for over two decades now. Behind his metal face a full arsenal of sound options is hidden. This 3-channel amp has several voicings per channel and also several combinations of sound shaping related to the rectification / DC conversion. This implementation<sup>1</sup> represents the modern variant of the voicing for channel 2/3 and the clean for channel 1. For channel 2/3 also a busted variant is implemented that is driven from another legendary green boost component in front of this growling beast of an amp. Beyond the original, this virtual amp also has an adjustable Mid Frequency (M.F.) and an additional Mid Cut (M.C.) per channel, to give you the possibility to tailor the sound even more to your needs. To your convenience the Virtual Amp (VA) also comes with a built-in Impulse Response Loader for direct access to a built-in or loadable custom cabinet model. The VA can be played as stand-alone Program or as VST/AU plugin in your Digital Audio Work Station. Also, a quick record functionality is available to record ideas directly in stand-alone mode as high quality 16-bit wav files. Furthermore, input and output level meter are available to prevent unwanted clipping distortion. All VA Settings are automatically stored after each session and restored at the next start. Settings can also be stored via preset as usual.

We wish you much fun with this Virtual Amp and endless hours of unchained high-gain chugging experience.

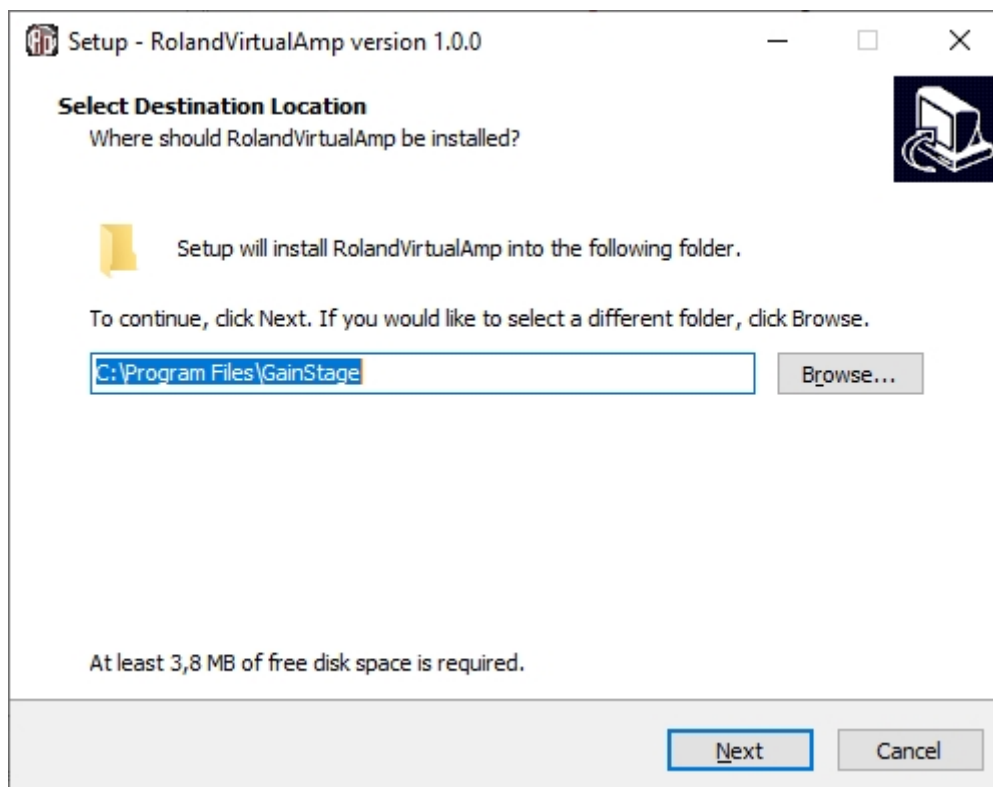
<sup>1</sup> Based on 100 Watt / bolt, diode, 6L6 power tubes / YOC 2009

# Installation of the Software

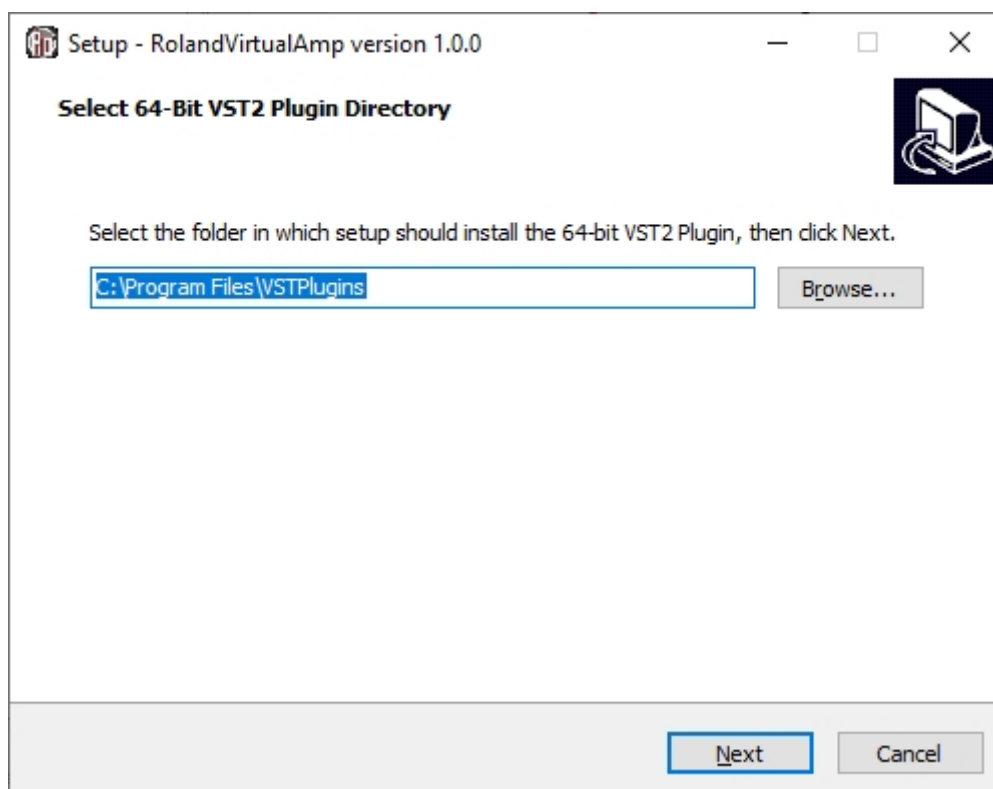
## WINDOWS

Common installation procedure, please open the installation program:  
*RolandVirtualAmp\_Installer.exe*

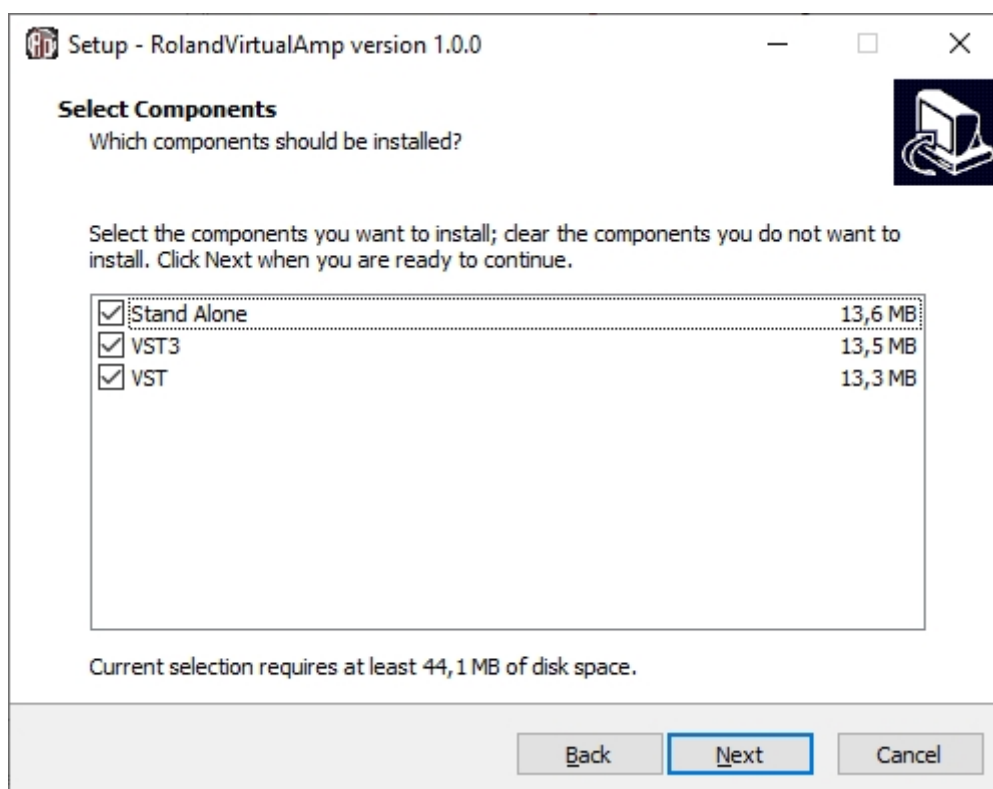
And choose the installation path of the stand-alone application



And the VST2 plugin, if you prefer to install it.

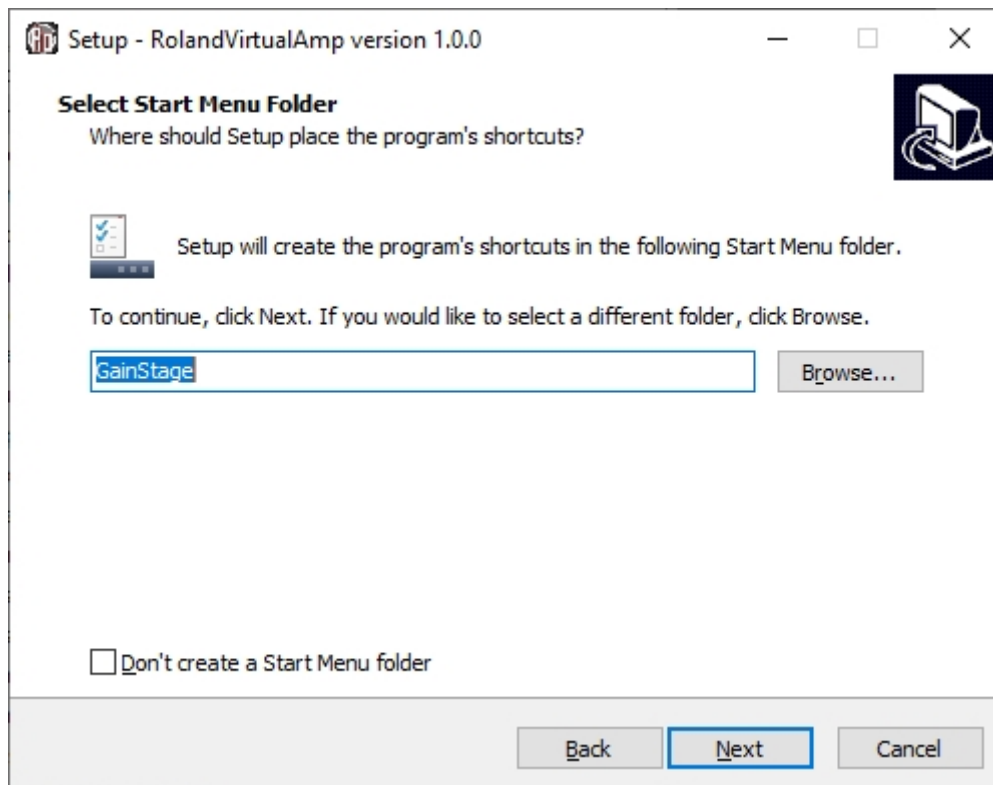


In the next dialog window, you can choose, which of the software parts you would like to install.

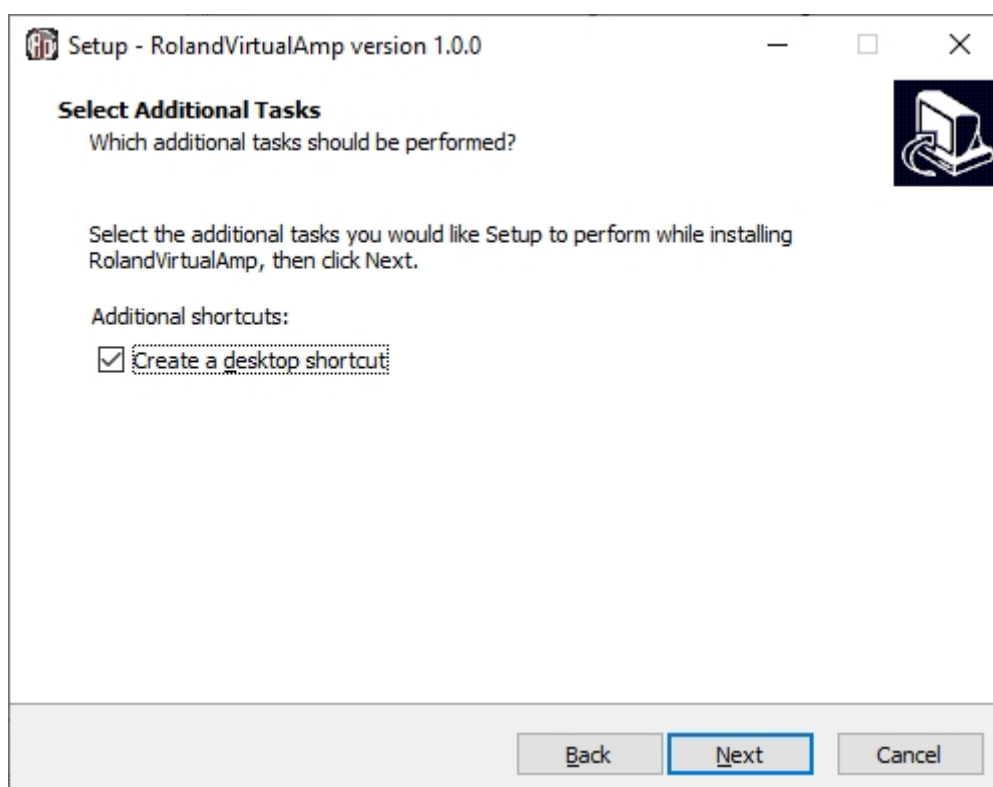


**Remark:** The VST3 Plugin will be installed in a standard folder on your system (usually: C:\Program Files\Common Files\VST3).

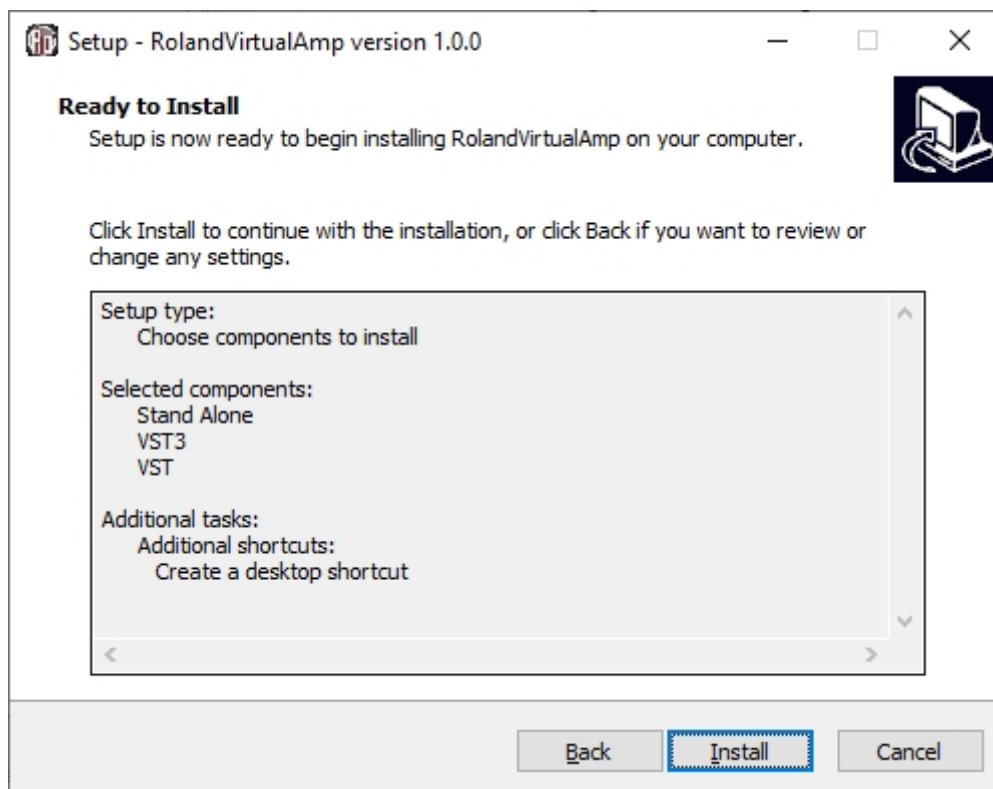
Furthermore, you can define, if a *Start Menu Folder* is created in the Windows start menu:



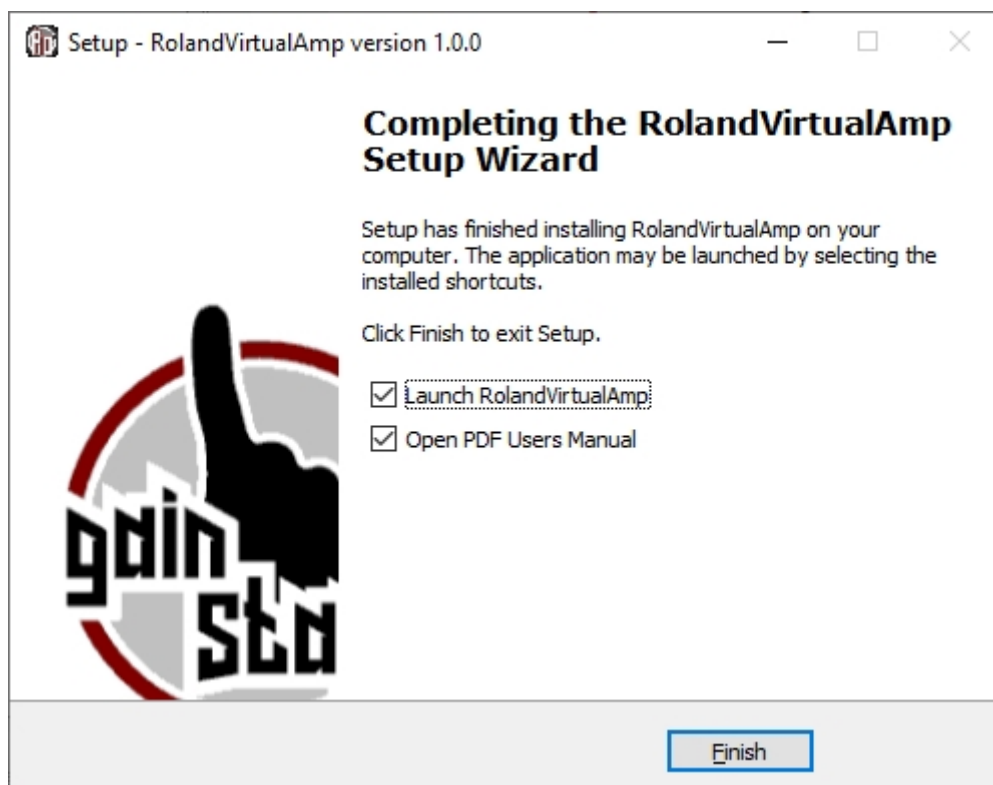
and a desktop shortcut should be created.



The last installation page finishes the procedure

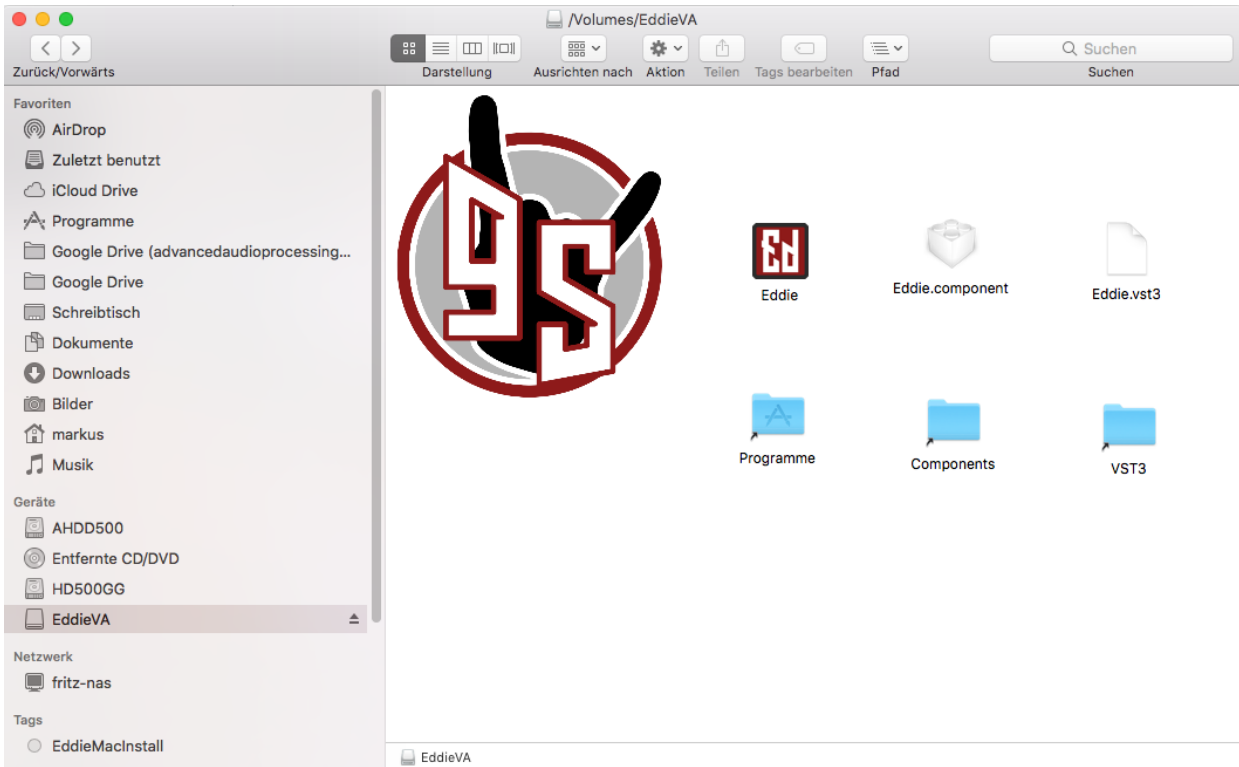


and you can now enjoy your new Virtual Amp.



## MAC

Open *RolandVirtualAmp\_Installer.dmg*. A Virtual Disc *RolandVAInstall* is mounted to the system. Drag *Roland*, *Roland.component* and *Roland.vst* as usual to the dedicated folders (*Alias*) below each item.

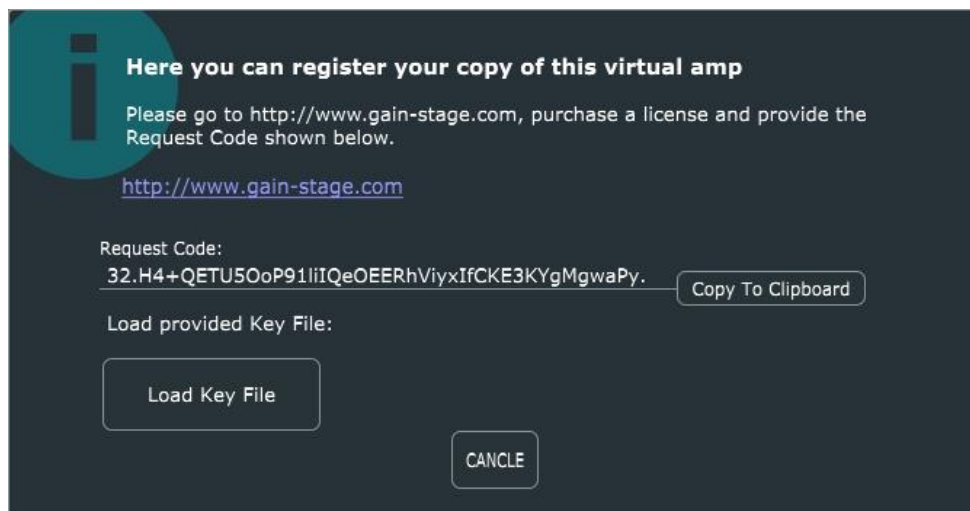


**Remark:** The Image shows the procedure exemplary for *EddieVirtualAmp*.



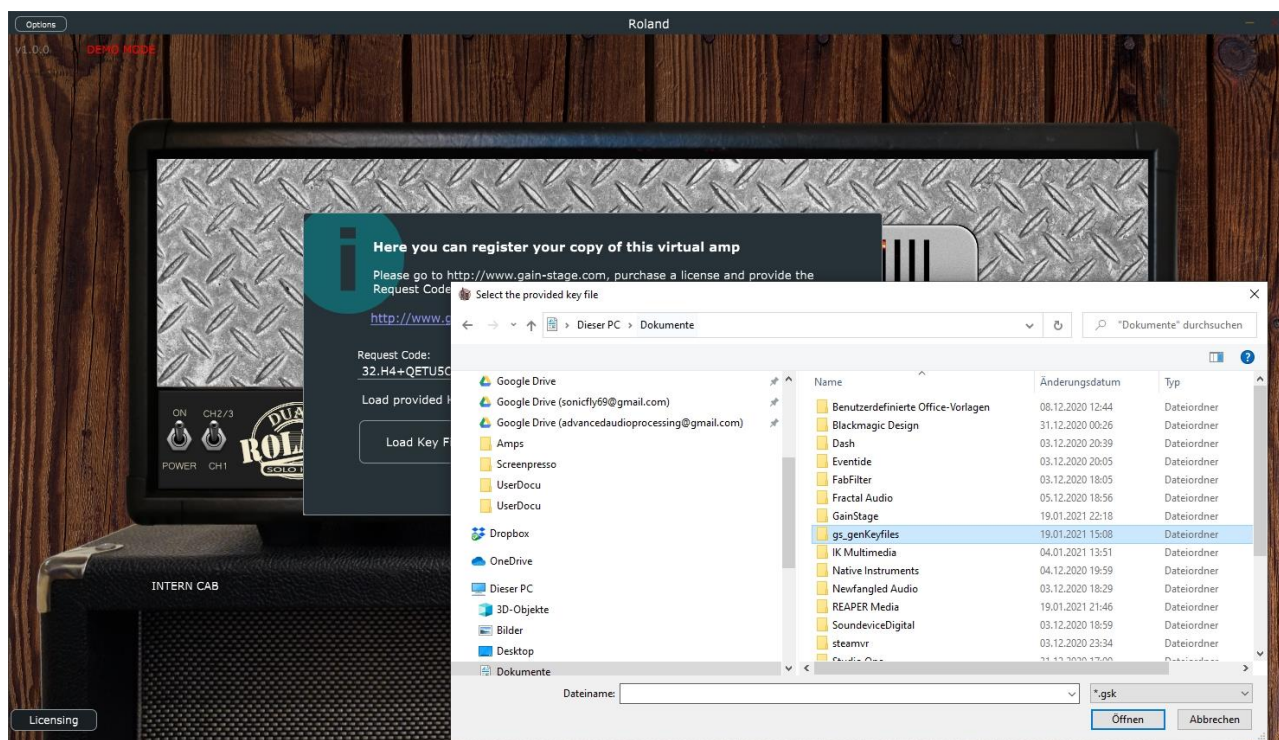
## Registration of the Software

To overcome the limitations of the demo mode you can buy a license online at <http://www.gain-stage.com> and register your Virtual Amp via the dialog shown after pressing the licensing button (in the left bottom corner).



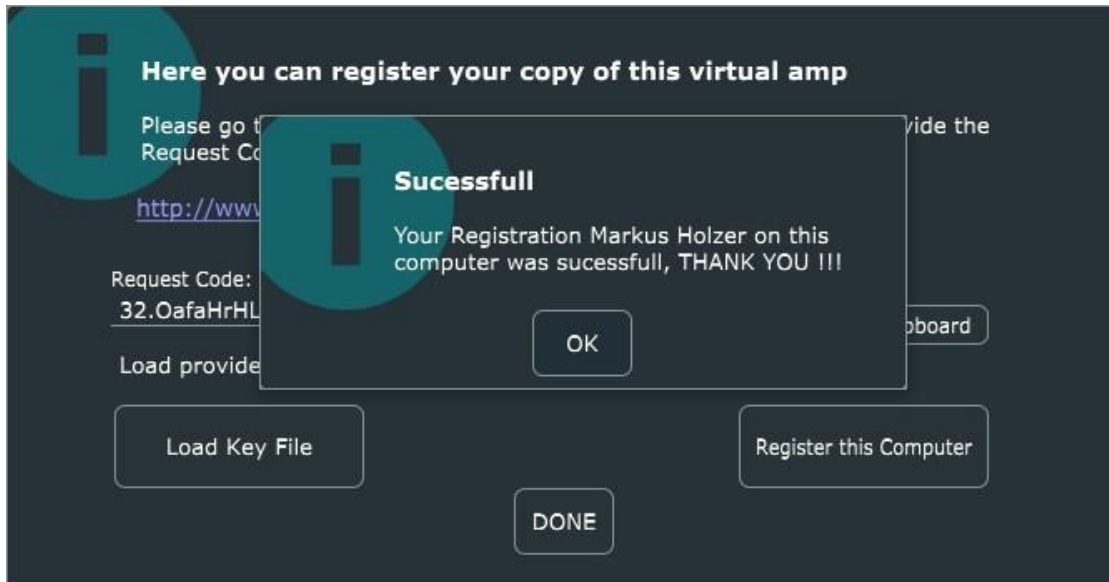
Copy the Request Code (a string like this:

`32.H4+QETU50oP911iIQeOEERhViYxIfCKE3KYgMgwaPy.`) and provide it to us, as we have stated after the purchase of the license. We provide you then a key file for the dedicated machine related to the request code. This you can load via the *Load Key File Button* and the occurring File Chooser Dialog.





After successful registration you can use your Virtual Amp without any limitations.



Please go to <http://www.gain-stage.com> for further product related information. You can also contact us via email: [contact.gainstage@gmail.com](mailto:contact.gainstage@gmail.com) for further support, questions and feedback of any product related kind.

**Remark:** The unregistered Virtual Amp is in DEMO MODE, which gives you the possibility to try out the sound, response and functionality of the software, but will open a DEMO MODE dialog box from time to time, that interrupts the user experience.

## AUDIO Setup

Via the Options menu in the upper left corner, you can open the Audio/MIDI setup. Here it is important to choose the right audio driver. For real-time convenience it is recommended to use an ASIO driver. Please then choose the right output and input channels according to your connections on the PC.

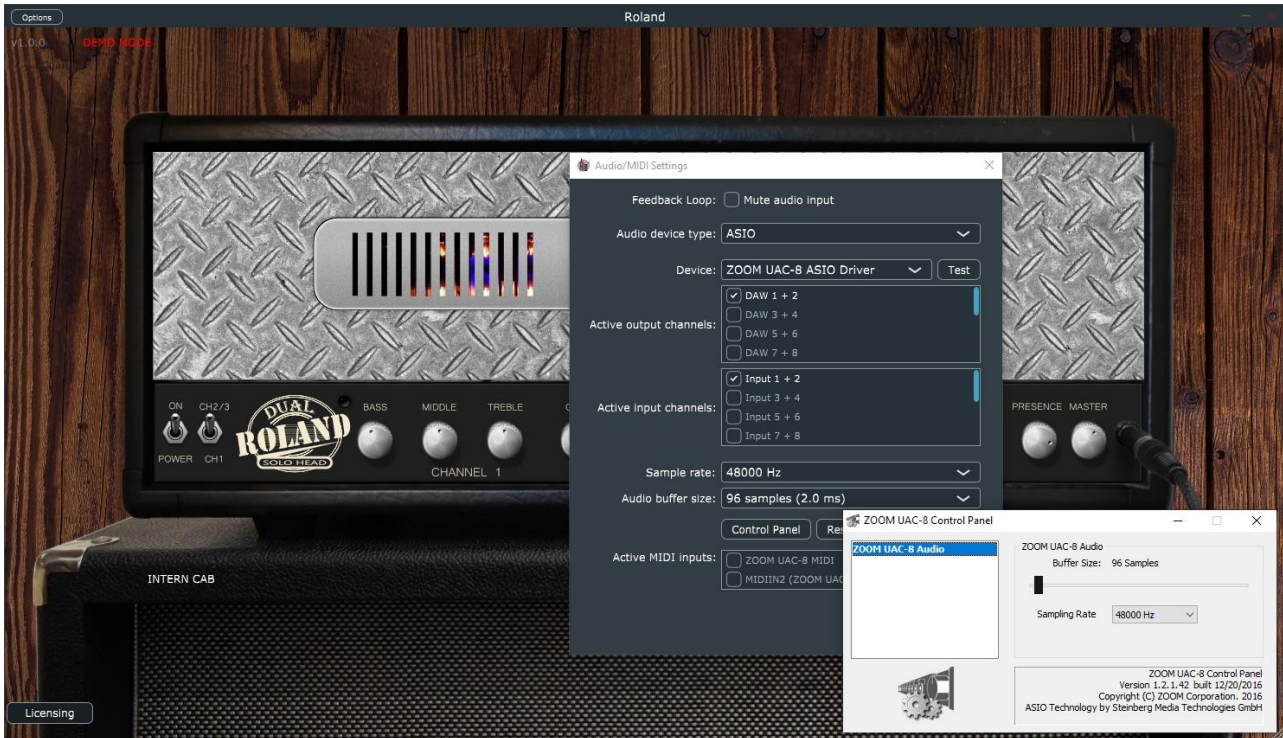
**Remark:** In the standalone application the VA only uses the 1<sup>st</sup> Input of a set stereo input pair.



After that, please set the *sample rate* according to your needs. As rule of thumb: the higher the *sample rate* the better the sound quality of the plugin but the bigger the *audio buffer* size must be set in your audio interface settings to not introduce distortion artifacts, to fulfill the real-time constrains.

## SOUNDCARD SETUP

If the chosen *sample rate* introduces distortion artifacts to the sound of the VA you have to adapt the *audio buffer size* in the driver menu of your audio device. This can be opened, via the *control panel* button, as shown below:



here you have to increase the *buffer size* of your audio device until no distortion artifacts are hearable on a chosen *sample rate*.

## Virtual Amp Settings

The self-explanatory *ON* switch is located at the left side. The channel switch to choose between the clean channel (CH1) and lead channels (CH2/3)<sup>2</sup> sits on the right side.



In between the parametric equalizer (EQ) and gain section knobs for each channel are located. In between the EQ sections a toggle switch to change between CH2/3 is placed. Between the Treble and Gain knob a Boost knob is located to switch On/Off the Tube Screamer Boost (which is placed as usual

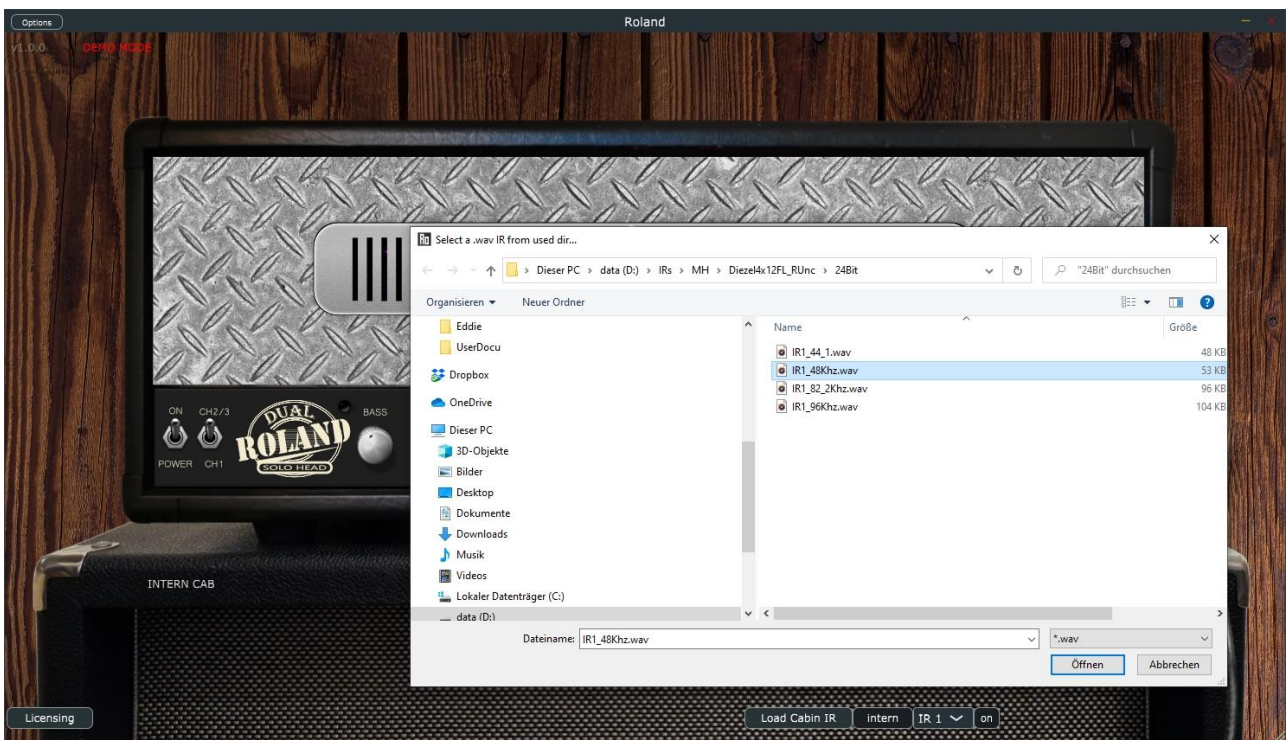
<sup>2</sup>: The Chosen channel is also indicated by the lights (LEDs) above the EQ section of the channel



in the signal path before the amp input) After the EQ sections two smaller knobs are placed (*M.F.* and *M.C.*), which can be used to shift the crucial Mid Frequency (*M.F.*) +/- 250 Hz around the center frequency of 750 Hz and dial in a Mid Cut (*M.C.*, rotation from right to left: 0 - 8 dB) filter at 400 Hz to get a more scoped and defined chugging rhythm sound. The sound stack of the amp concludes with the usual *Presence* and *Master* Knob (overall volume). To your convenience, all set parameters of the amp are automatically and persistent stored after closing the *stand-alone* or *plugin* Virtual Amp in between sessions. You can also generate user specific preset files to store a dedicated setup for a future session via the Options or DAW (Digital Audio Workstation) menu.

## USE INTERNAL AND EXTERNAL IRS

The Virtual Amp comes with a built-in **Impulse Response (IR) Player**. All related buttons are located at the right bottom of the GUI. The IR Player includes several intern *Speaker Cabinet* models selectable with a dropdown box and also features the capability to load external IRs with a *Load Cabin IR* button.



When pressed, a file choosing dialog opens up (the last used path is always stored to your convenience) to choose an IR audio file (in \*.wav format). You can switch from intern to extern IR via *intern/extern* button. The IR based cabinet emulation can also be switched off, to use your own *Impulse Response Player* (*on/off*-Button at the right lower corner).